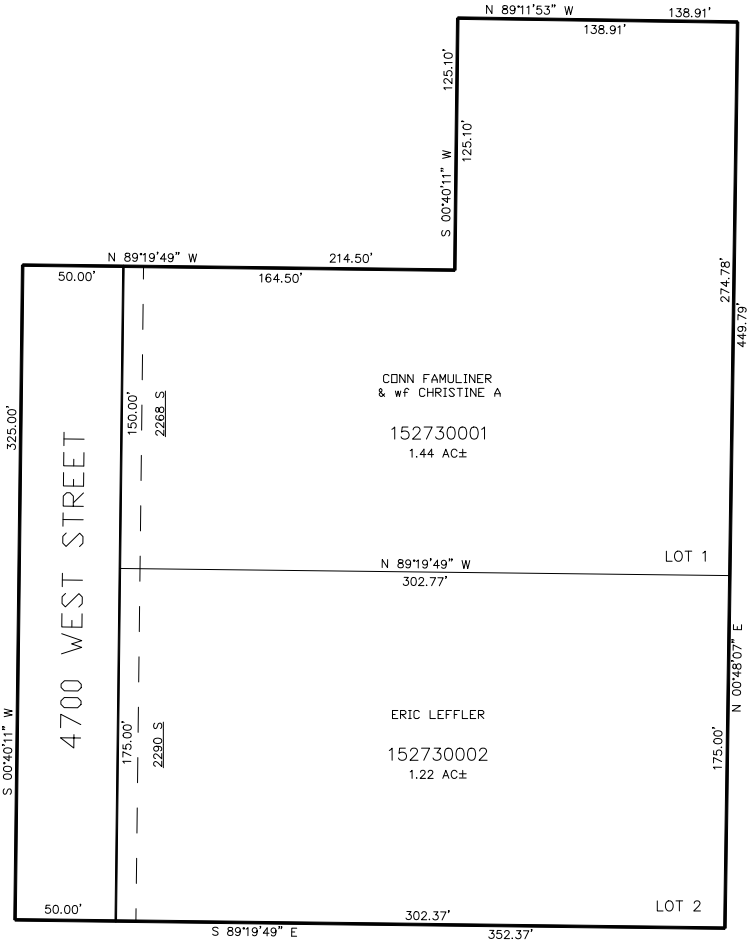


PART OF THE S.E.1/4, OF SECTION 29, T.6N., R.2W., S.L.B. & M.
NEILSON ESTATES NO. 3

TAXING UNIT: 516

IN WEBER COUNTY
SCALE 1" = 50'

SEE PAGE 79-1



SEE PAGE 79-1

SEE PAGE 79-1

SEE PAGE 79-1

FOR COMPLETE ENG DATA SEE
ORIGINAL DEDICATION PLAT IN
BOOK 52, PAGE 24 OF RECORDS.

10' UTILITY & DRAINAGE EASEMENTS EACH
SIDE OF PROPERTY LINES AS INDICATED
BY DASHED LINES EXCEPT AS OTHERWISE
SHOWN.